

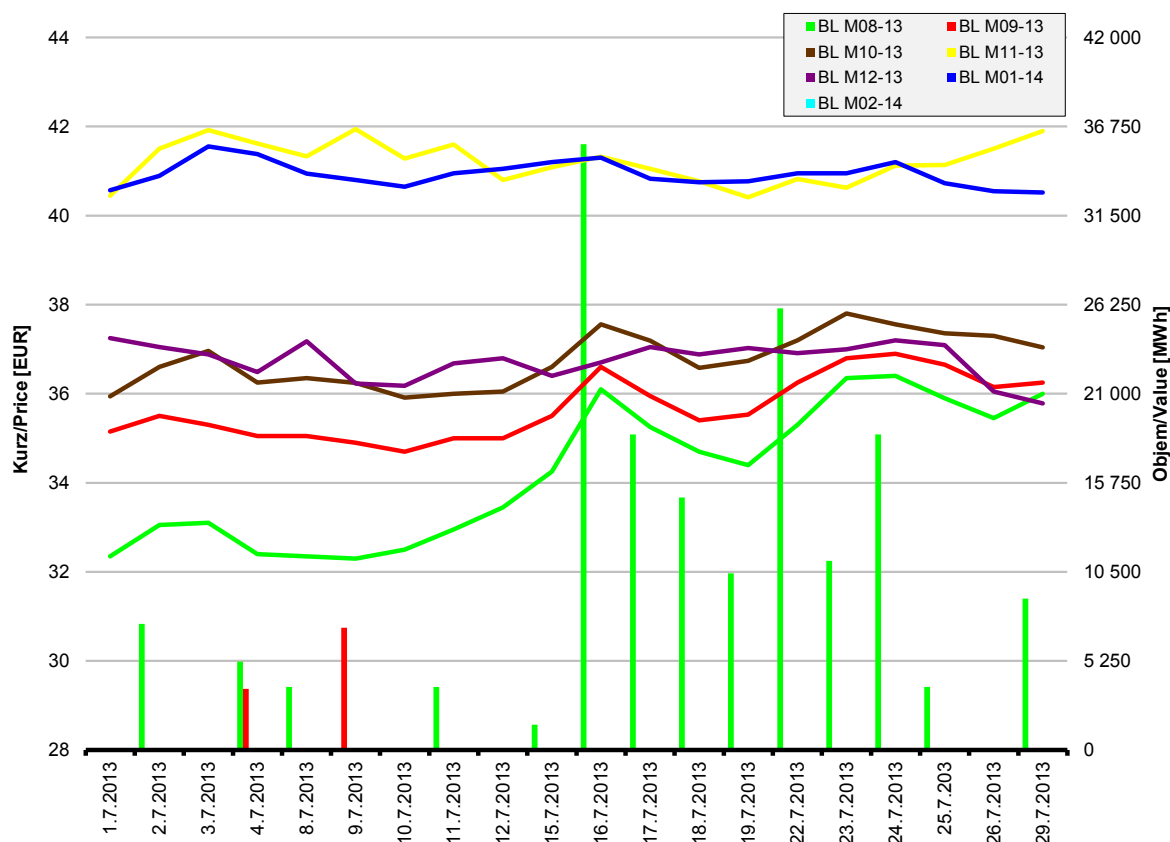
# Měsíční statistika Červenec 2013

## Monthly Statistics July 2013

### MĚSÍČNÍ CZECH BASE LOAD FUTURES PRODUKTY S FINANČNÍM VYPOŘÁDÁNÍM

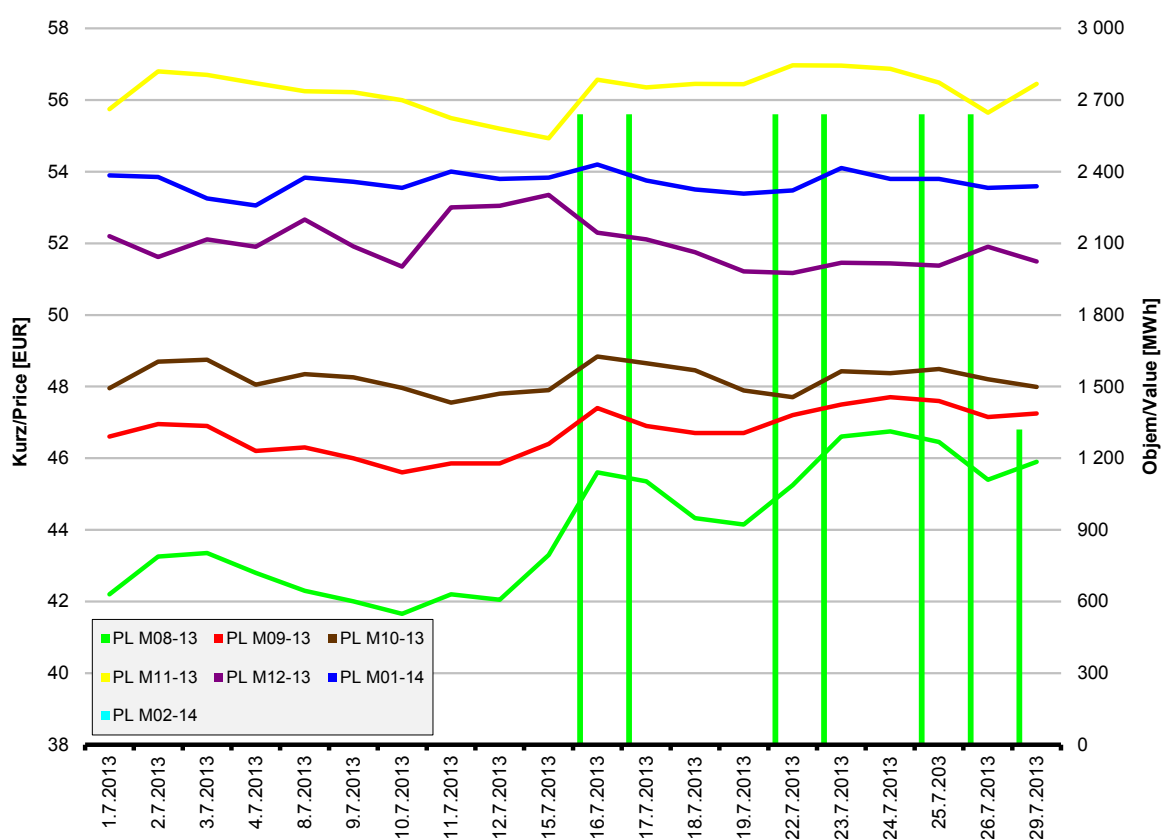
### MONTHLY CZECH BASE LOAD FUTURES PRODUCTS WITH FINANCIAL SETTLEMENT

| Produkt<br>Product | Počet<br>obchodů<br>Number<br>of Trades | Zobchodované<br>kontrakty<br>Traded Contracts<br>(MW) | Objem<br>Value<br>(MWh) | Objem<br>Value<br>(EUR) |
|--------------------|---|---|-------------------------|-------------------------|
| BL M08 - 13        | 67                                      | 238   | 177 072                 | 6 228 135.60            |
| BL M09 - 13        | 4                                       | 15  | 10 800                  | 377 280.00              |
| BL M10 - 13        | 0                                       | 0   | 0                       | 0.00                    |
| BL M11 - 13        | 0                                       | 0   | 0                       | 0.00                    |
| BL M12 - 13        | 0                                       | 0   | 0                       | 0.00                    |
| BL M01 - 14        | 0                                       | 0   | 0                       | 0.00                    |
| BL M02 - 14        | 0                                       | 0   | 0                       | 0.00                    |



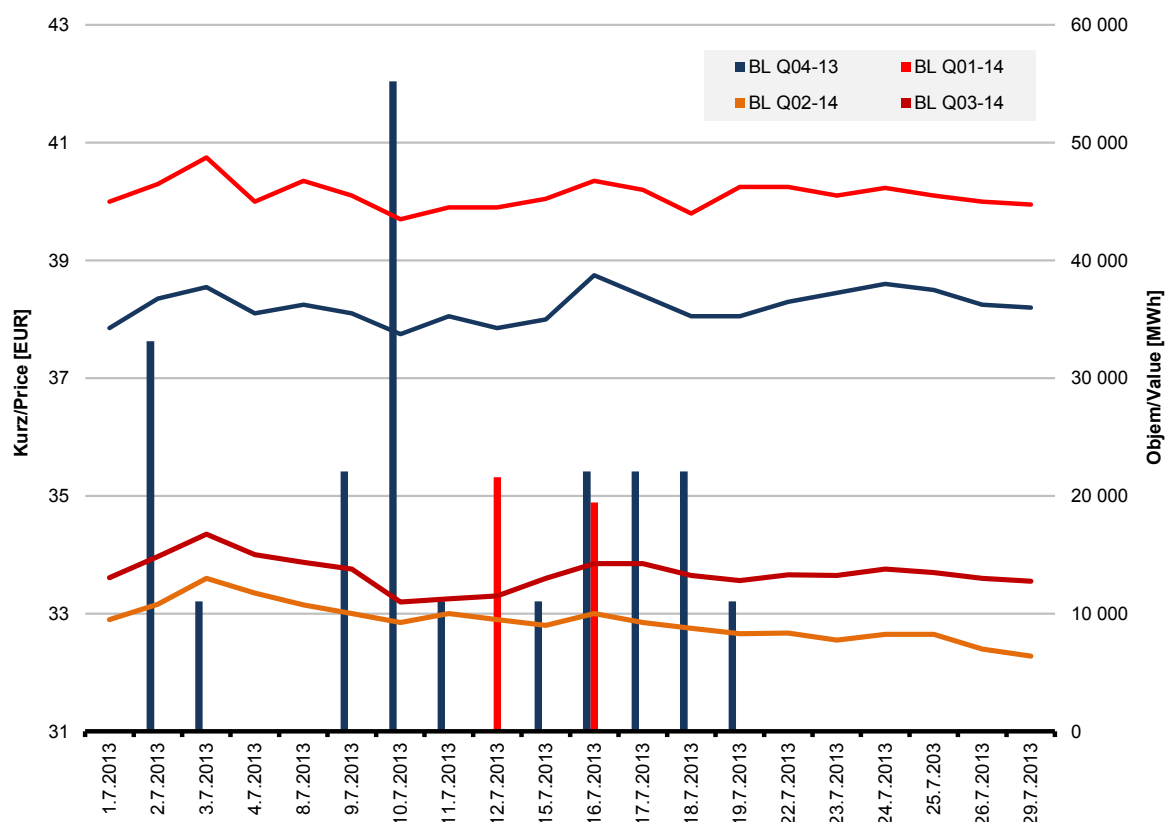
## MĚSÍČNÍ CZECH PEAK LOAD FUTURES PRODUKTY S FINANČNÍM VYPOŘÁDÁNÍM MONTHLY CZECH PEAK LOAD FUTURES PRODUCTS WITH FINANCIAL SETTLEMENT

| Produkt<br>Product | Počet<br>obchodů<br>Number<br>of Trades | Zobchodované<br>kontrakty<br>Traded Contracts<br>(MW) | Objem<br>Value<br>(MWh) | Objem<br>Value<br>(EUR) |
|--------------------|---|---|-------------------------|-------------------------|
| PL M08 - 13        | 14                                      | 65  | 17 160                  | 787 182.00              |
| PL M09 - 13        | 0                                       | 0   | 0                       | 0.00                    |
| PL M10 - 13        | 0                                       | 0   | 0                       | 0.00                    |
| PL M11 - 13        | 0                                       | 0   | 0                       | 0.00                    |
| PL M12 - 13        | 0                                       | 0   | 0                       | 0.00                    |
| PL M01 - 14        | 0                                       | 0   | 0                       | 0.00                    |
| PL M02 - 14        | 0                                       | 0   | 0                       | 0.00                    |



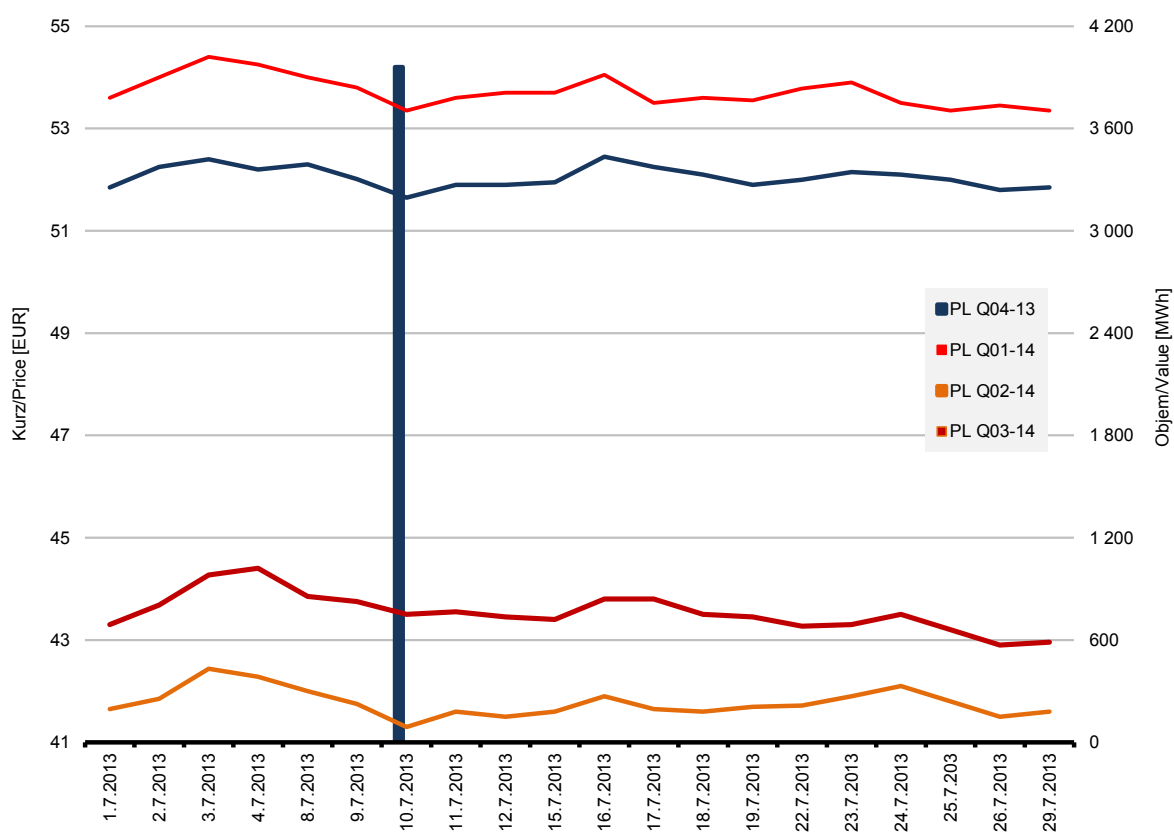
## ČTVRTLETNÍ CZECH BASE LOAD FUTURES PRODUKTY S FINANČNÍM VYPOŘÁDÁNÍM QUARTERLY CZECH BASE LOAD FUTURES PRODUCTS WITH FINANCIAL SETTLEMENT

| Produkt<br>Product | Počet<br>obchodů<br>Number<br>of Trades | Zobchodované<br>kontrakty<br>Traded Contracts<br>(MW) | Objem<br>Value<br>(MWh) | Objem<br>Value<br>(EUR) |
|--------------------|---|---|-------------------------|-------------------------|
| BL Q04-13          | 59                                      | 152   | 335 768                 | 12 791 435.40           |
| BL Q01-14          | 4                                       | 22  | 47 498                  | 1 899 704.10            |
| BL Q02-14          | 0                                       | 0   | 0                       | 0.00                    |
| BL Q03-14          | 0                                       | 0   | 0                       | 0.00                    |



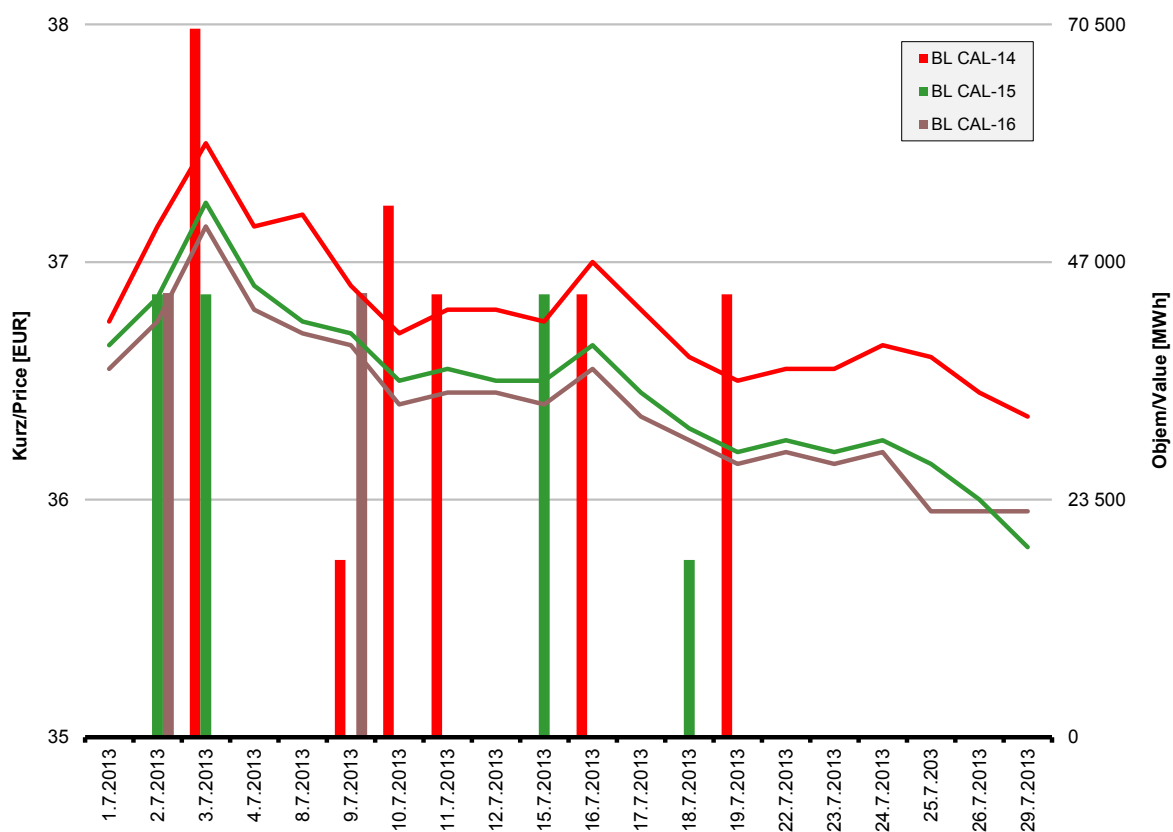
## ČTVRTLETNÍ CZECH PEAK LOAD FUTURES PRODUKTY S FINANČNÍM VYPOŘÁDÁNÍM QUARTERLY CZECH PEAK LOAD FUTURES PRODUCTS WITH FINANCIAL SETTLEMENT

| Produkt<br>Product | Počet<br>obchodů<br>Number<br>of Trades | Zobchodované<br>kontrakty<br>Traded Contracts<br>(MW) | Objem<br>Value<br>(MWh) | Objem<br>Value<br>(EUR) |
|--------------------|---|---|-------------------------|-------------------------|
| PL Q04-13          | 3                                       | 10  | 7 920                   | 409 860.00              |
| PL Q01-14          | 0                                       | 0   | 0                       | 0.00                    |
| PL Q02-14          | 0                                       | 0   | 0                       | 0.00                    |
| PL Q03-14          | 0                                       | 0   | 0                       | 0.00                    |



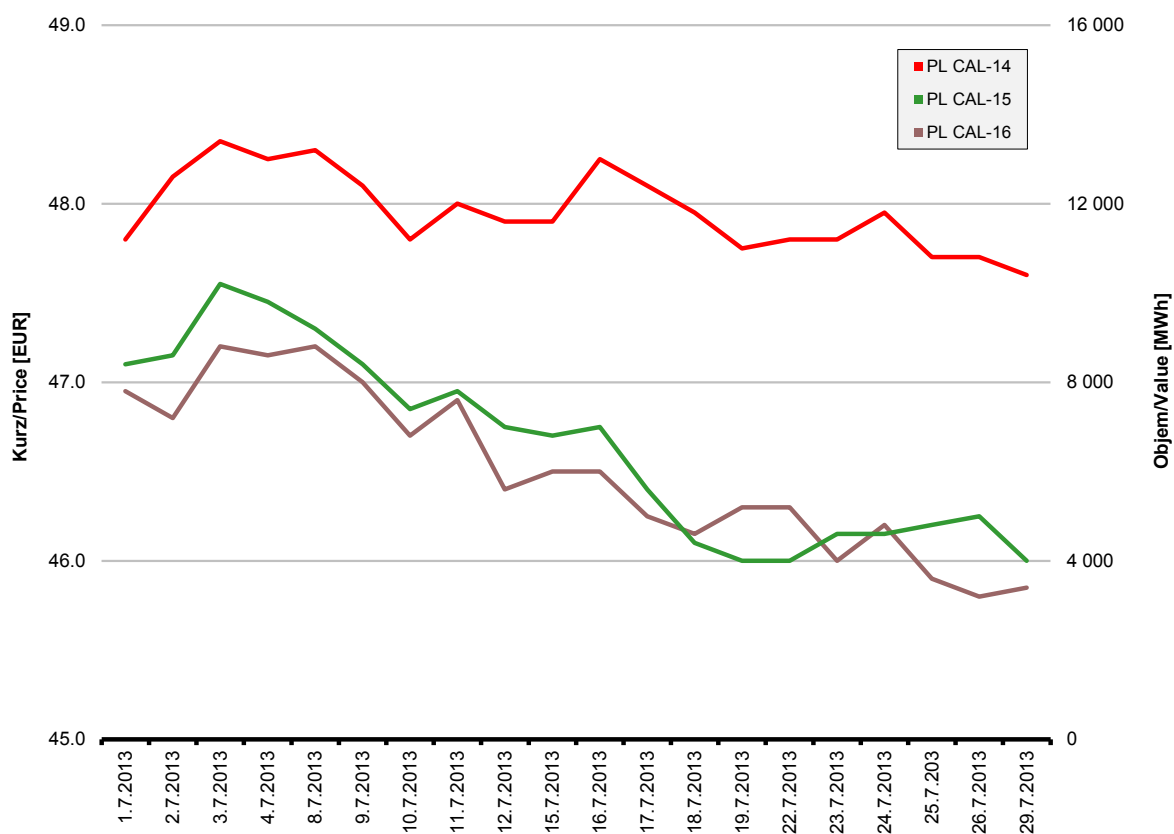
## ROČNÍ CZECH BASE LOAD FUTURES PRODUKTY S FINANČNÍM VYPOŘÁDÁNÍM YEARLY CZECH BASE LOAD FUTURES PRODUCTS WITH FINANCIAL SETTLEMENT

| Produkt<br>Product | Počet<br>obchodů<br>Number<br>of Trades | Zobchodované<br>kontrakty<br>Traded Contracts<br>(MW) | Objem<br>Value<br>(MWh) | Objem<br>Value<br>(EUR) |
|--------------------|---|---|-------------------------|-------------------------|
| BL CAL - 14        | 25                                      | 47  | 411 720                 | 15 016 830.00           |
| BL CAL - 15        | 7                                       | 17  | 148 920                 | 5 460 984.00            |
| BL CAL - 16        | 4                                       | 10  | 87 840                  | 3 223 728.00            |



## ROČNÍ CZECH PEAK LOAD FUTURES PRODUKTY S FINANČNÍM VYPOŘÁDÁNÍM YEARLY CZECH PEAK LOAD FUTURES PRODUCTS WITH FINANCIAL SETTLEMENT

| Produkt<br>Product | Počet<br>obchodů<br>Number<br>of Trades | Zobchodované<br>kontrakty<br>Traded Contracts<br>(MW) | Objem<br>Value<br>(MWh) | Objem<br>Value<br>(EUR) |
|--------------------|---|---|-------------------------|-------------------------|
| PL CAL-14          | 0                                       | 0   | 0                       | 0.00                    |
| PL CAL-15          | 0                                       | 0   | 0                       | 0.00                    |
| PL CAL-16          | 0                                       | 0   | 0                       | 0.00                    |



## STATISTICKÉ ÚDAJE / STATISTICAL DATA

### MĚSÍČNÍ STATISTIKY OBCHODOVÁNÍ V ROCE 2013 / MONTHLY TRADING STATISTICS IN 2013

#### 1) Czech Futures kontrakty s finančním vypořádáním / Czech Futures Contracts with Financial Settlement

| Měsíc<br>Month | Base Load   |                         |                         | Peak Load   |                         |                         | Celkem / Total                                    |                         |                         |
|----------------|---|-------------------------|-------------------------|---|-------------------------|-------------------------|---|-------------------------|-------------------------|
|                | Počet kontraktů<br>Number of<br>Contracts<br>(MW) | Objem<br>Value<br>(MWh) | Objem<br>Value<br>(EUR) | Počet kontraktů<br>Number of<br>Contracts<br>(MW) | Objem<br>Value<br>(MWh) | Objem<br>Value<br>(EUR) | Počet kontraktů<br>Number of<br>Contracts<br>(MW) | Objem<br>Value<br>(MWh) | Objem<br>Value<br>(EUR) |
| 01             | 984   | 2 689 492               | 114 323 759.53          | 220   | 124 260                 | 6 740 967.00            | 1 204   | 2 813 752               | 121 064 726.53          |
| 02             | 590   | 2 860 332               | 117 233 507.85          | 80  | 91 080                  | 4 630 695.00            | 670   | 2 951 412               | 121 864 202.85          |
| 03             | 680   | 1 892 742               | 73 160 057.75           | 70  | 44 520                  | 2 013 984.00            | 750   | 1 937 262               | 75 174 041.75           |
| 04             | 518   | 1 273 144               | 49 151 734.35           | 114   | 51 204                  | 2 276 587.20            | 632   | 1 324 348               | 51 428 321.55           |
| 05             | 311   | 966 002                 | 35 628 081.35           | 15  | 6 360                   | 266 526.00              | 326   | 972 362                 | 35 894 607.35           |
| 06             | 608   | 1 848 516               | 65 864 512.30           | 35  | 40 680                  | 1 936 173.00            | 643   | 1 889 196               | 67 800 685.30           |
| 07             | 501   | 1 219 618               | 44 998 097.10           | 75  | 25 080                  | 1 197 042.00            | 576   | 1 244 698               | 46 195 139.10           |
| 08             |   |                         |                         |   |                         |                         |   |                         |                         |
| 09             |   |                         |                         |   |                         |                         |   |                         |                         |
| 10             |   |                         |                         |   |                         |                         |   |                         |                         |
| 11             |   |                         |                         |   |                         |                         |   |                         |                         |
| 12             |   |                         |                         |   |                         |                         |   |                         |                         |
| 2013           | 4 192   | 12 749 846              | 500 359 750.23          | 609   | 383 184                 | 19 061 974.20           | 4 801   | 13 133 030              | 519 421 724.43          |

#### 2) Slovenské FUTURES / Slovakia FUTURES

| Měsíc<br>Month | Celkem / Total                                    |                         |                         |
|----------------|---|-------------------------|-------------------------|
|                | Počet kontraktů<br>Number of<br>Contracts<br>(MW) | Objem<br>Value<br>(MWh) | Objem<br>Value<br>(EUR) |
| 01             | 55  | 47 005                  | 1 921 894.50            |
| 02             | 10  | 54 720                  | 2 213 520.00            |
| 03             | 40  | 28 800                  | 1 041 120.00            |
| 04             | 50  | 84 600                  | 3 125 592.00            |
| 05             | 30  | 21 600                  | 643 680.00              |
| 06             | 10  | 7 440                   | 223 200.00              |
| 07             | 40  | 109 920                 | 4 024 674.00            |
| 08             |   |                         |                         |
| 09             |   |                         |                         |
| 10             |   |                         |                         |
| 11             |   |                         |                         |
| 12             |   |                         |                         |
| 2013           | 235   | 354 085                 | 13 193 680.50           |

#### 3) Maďarské FUTURES / Hungary FUTURES

| Měsíc<br>Month | Celkem / Total                                    |                         |                         |
|----------------|---|-------------------------|-------------------------|
|                | Počet kontraktů<br>Number of<br>Contracts<br>(MW) | Objem<br>Value<br>(MWh) | Objem<br>Value<br>(EUR) |
| 01             | 0   | 0                       | 0.00                    |
| 02             | 10  | 21 840                  | 880 698.00              |
| 03             | 45  | 190 225                 | 8 761 835.00            |
| 04             | 105   | 347 770                 | 14 996 552.90           |
| 05             | 100   | 207 730                 | 8 559 907.25            |
| 06             | 119   | 327 931                 | 13 383 052.75           |
| 07             | 65  | 164 655                 | 6 899 412.00            |
| 08             |   |                         |                         |
| 09             |   |                         |                         |
| 10             |   |                         |                         |
| 11             |   |                         |                         |
| 12             |   |                         |                         |
| 2013           | 444   | 1 260 151               | 53 481 457.90           |

### ROČNÍ STATISTIKY OBCHODOVÁNÍ FUTURES KONTRAKTŮ / YEARLY TRADING STATISTICS FUTURES CONTRACTS

| Czech<br>Market -<br>Fyzické v.<br>Physical<br>Settl. | Base Load   |                         |                         | Peak Load   |                         |                         | Celkem / Total                                    |                         |                         |
|---|---|-------------------------|-------------------------|---|-------------------------|-------------------------|---|-------------------------|-------------------------|
|   | Počet kontraktů<br>Number of<br>Contracts<br>(MW) | Objem<br>Value<br>(MWh) | Objem<br>Value<br>(EUR) | Počet kontraktů<br>Number of<br>Contracts<br>(MW) | Objem<br>Value<br>(MWh) | Objem<br>Value<br>(EUR) | Počet kontraktů<br>Number of<br>Contracts<br>(MW) | Objem<br>Value<br>(MWh) | Objem<br>Value<br>(EUR) |
| 2007  | 3 558   | 33 313 386              | 1 811 764 101.58        | 1 168   | 1 054 932               | 86 059 623              | 4 726   | 34 368 318              | 1 897 823 724.58        |
| 2008  | 11 217  | 30 417 966              | 2 202 635 618.40        | 2 825   | 2 309 400               | 238 328 776             | 14 042  | 32 727 366              | 2 440 964 394.60        |
| 2009  | 7 895   | 22 930 215              | 1 073 141 552.15        | 2 325   | 1 356 600               | 86 268 450              | 10 220  | 24 286 815              | 1 159 410 002.15        |
| 2010  | 1 796   | 10 011 205              | 480 926 788.65          | 105   | 117 000                 | 7 231 218               | 1 901   | 10 128 205              | 488 158 006.65          |
| 2011  | 656   | 2 179 889               | 116 483 607.84          | 5   | 1 380                   | 83 628                  | 661   | 2 181 269               | 116 567 235.84          |
| 2012  | 20  | 43 680                  | 1 901 172.00            | 0   | 0                       | 0                       | 20  | 43 680                  | 1 901 172.00            |

| Czech<br>Market -<br>finanční v.<br>Financial<br>Settl. | Base Load   |                         |                         | Peak Load   |                         |                         | Celkem / Total                                    |                         |                         |
|---|---|-------------------------|-------------------------|---|-------------------------|-------------------------|---|-------------------------|-------------------------|
|   | Počet kontraktů<br>Number of<br>Contracts<br>(MW) | Objem<br>Value<br>(MWh) | Objem<br>Value<br>(EUR) | Počet kontraktů<br>Number of<br>Contracts<br>(MW) | Objem<br>Value<br>(MWh) | Objem<br>Value<br>(EUR) | Počet kontraktů<br>Number of<br>Contracts<br>(MW) | Objem<br>Value<br>(MWh) | Objem<br>Value<br>(EUR) |
| 2010  | 3 422   | 9 333 309               | 441 578 656.60          | 869   | 454 800                 | 28 194 936              | 4 291   | 9 788 109               | 469 773 592.60          |
| 2011  | 6 302   | 19 707 428              | 1 071 697 537.93        | 790   | 354 540                 | 24 294 072              | 7 092   | 20 061 968              | 1 095 991 609.93        |
| 2012  | 5 975   | 17 191 982              | 808 933 184.85          | 1 066   | 628 404                 | 36 893 794              | 7 041   | 17 820 386              | 845 826 979.05          |

| SPOT<br>Market | Počet kontraktů<br>Number of<br>Contracts<br>(MW) | Objem<br>Value<br>(MWh) | Objem<br>Value<br>(EUR) |
|----------------|---|-------------------------|-------------------------|
| 2008           | 9 130   | 93 130                  | 7 073 268.54            |
| 2009           | 10  | 240                     | 16 800.00               |
| 2010           | 4 023   | 83 872                  | 3 858 958.50            |
| 2011           | 1 315   | 31 355                  | 1 655 833.50            |
| 2012           | 660   | 1 562 175               | 74 019 819.50           |

| Other<br>Markets | Počet kontraktů<br>Number of<br>Contracts<br>(MW) | Objem<br>Value<br>(MWh) | Objem<br>Value<br>(EUR) |
|------------------|---|-------------------------|-------------------------|
| 2008             |   |                         |                         |
| 2009             | 1 863   | 4 652 490               | 236 703 068.00          |
| 2010             | 1 380   | 4 390 020               | 213 442 237.00          |
| 2011             | 940   | 2 100 462               | 114 874 245.25          |
| 2012             | 54  | 400 464                 | 21 865 236.00           |